

锂电一体化灯具系列

LITHIUM ELECTRIC INTEGRATED LAMPS AND LANTERNS

型号: LDTYN-LDZ09301 型



LED 芯片性能卓越

LED chip has excellent performance



采用进口LED芯片,散热小性能高,无频闪,健康,优质,环保。

The imported LED chip has the advantages of high heat dissipation, no strobe, good health, high quality and environmental protection.

高质量合金铝材

High quality aluminum alloy



采用优质铝合金材料设计,便于维修,安装,维护,修理。

Design of high quality aluminum alloy materials, it is easy to repair, install, maintain and repair.

内置锂电池

Built in lithium battery



锂电池体积小,重量轻、使用时间长耐低温性好。

Lithium battery has the advantages of small volume, light weight, long service life and low temperature resistance.

产品技术参数表 Product Specification

额定功率	Rated Power	15-40W
光通量	Luminous Flux	2100-5600lm
LED结温	LED junction temperature	<60°C
LED放光效率	LED efficiency	140 lm/W
色温	Color Temperature	3000K 4000K 5000K 6000K
显色性	Color rendering	Ra>75%
功率因素	Power Factor	>0.95
防护等级	Protection class	IP65
工作环境温度	Operating temperature	-40°C ~ +50°C
防护等级	Protection Grade	IP66
灯具寿命	Lamp Life	>50000小时

色温、功率和光学角度可按客户订制。
本表所示参数均在环境温度 25°C, 湿度 65% 的实验室环境中测的。
所有配光测的流明为最大流明。

Color Temperature, Wattage and optical angle can be customized.
All parameters are tested at 25 °C ambient temperature, 65% humidity laboratory environment.
All Luminous flux is the maximum value among all kinds of light distribution.



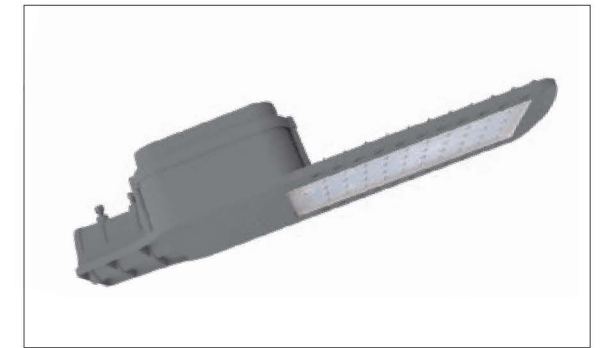
型号: LDTYN-LDZ09401 型



型号: LDTYN-LDZ09402 型



型号: LDTYN-LDZ09403 型



型号: LDTYN-LDZ09404 型

产品特点 Product Features

- 高性能参数: 采用进口高效芯片专利封装, 比传统路灯节能 60%;
- 专利配光设计: 路面均匀度达到 0.7 以上, 照度均匀无光斑现象;
- 显色性高: 还原物体本来颜色, 美化城市环境;
- 环保健康: LED 无汞、无紫外线、无辐射、更有利于环境保
- 护和人眼的健康;
- 适用场所: 高速公路、主干道、次干道、支路等。

- Performance parameters: imported high chip packaging patents, 60% energy saving than the traditional street lamps;
- Patented optical design: the road to achieve uniformity of 0.7 or more, even without illumination spot phenomenon;
- High color: restore original color of the object, beautify the urban environment;
- Environmental Health: LED no mercury, no UV, no radiation, the human eye is more conducive to environmental protection and health;
- Application areas: highways, main roads, secondary roads, slip roads and so on.



型号: LDTYN-09401 型 高度: 5-8m 光源: LED

地址: 扬州市北郊高邮菱塘镇工业园区 (邮天路与新扬菱路交界处)
传真: 0514-84238418 http://www.bswjt.com(照明网址)

电话: 0514-84230418 84231418 QQ:2851558279
http://www.yhjtc.com www.jsyhjtq.com (交通网址)